

# LRC Simple Belt Tutorial

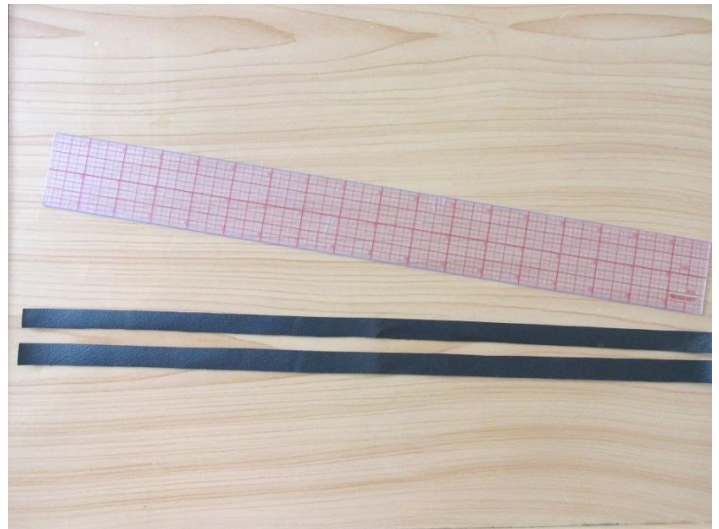
Make a simple belt to accent your doll's costumes or fashion wardrobe.

What you'll need:

- Scissors
- Straight edge
- Tacky glue
- Tailor's Awl or similar pointy thing (for belt holes)
- Vinyl fabric
- Mini "heel roller" belt buckle (about  $\frac{3}{4}$ " width)



1. Start by cutting two  $17\frac{1}{2}$ " x  $\frac{1}{2}$ " strips from the vinyl (or  $17\frac{1}{2}$ " x whatever the inside of your belt buckle measures). Use a straight edge to trace the measurements onto fabric for a clean line.



2. Line up the vinyl strips with each other, right sides out. Snip the corners off both ends of the belt.



3. With right sides out, add a thin layer of glue between the two strips and glue them back to back to hold them temporarily.

While the glue begins to dry, cut a small  $\frac{1}{4}$ " x 2" strip of vinyl. This will be the belt loop.



4. Fold the loop in half, wrong side out. Carefully stitch a  $\frac{1}{4}$ " seam at the raw end. Trim the raw end corners as shown.



5. Turn loop right side out. Open out the seam and flatten with your fingers.





6. When the glue on the belt straps is completely dry, carefully stitch all the way around the edge of the belt, staying close to the edge, and securing the two belt straps together. Round one end of the belt.



7. About 2" away from the non-rounded end, poke a hole in the center of the strap with the tailor's awl.

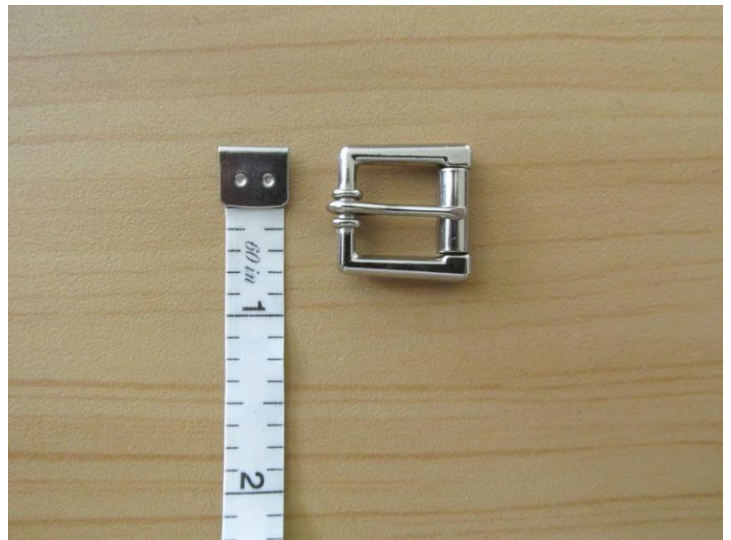


8. With some narrow tipped scissors, start at the hole and cut a very small slit in the strap, no bigger than  $\frac{1}{4}$ " wide.



9. This tutorial calls for a "heel roller" belt buckle, which has a prong attached at one end and a roller at the other end. Other buckle types may be used, but may also require a different procedure to complete the belt.

The belt buckle will need to be fairly small to fit your doll. Craft and fabric stores usually carry a supply of mini belt buckles.



10. From the non-rounded end, slip the strap through the buckle and push the prong through the slit you cut.

**Tip:** Make sure the buckle is facing forward, with the prong able to lift over the roller, and not stuck under it.





11. The non-rounded end will be hidden underneath when the belt is complete.



12. From the opposite (rounded) end, slide the loop through all the way to the buckle end. The seam of the loop should be facing downward.



13. Fold the non-rounded end under, though it should lay over the back of the loop, sandwiched within the fold of strap. (This will keep it from sliding when the end is stitched.) Stitch across the strap below the loop, locking it in place near the buckle.



14. From the opposite (rounded) end, measure 2" from end, and with the tailor's awl poke a hole in the center of the belt. Poke four additional holes 1" apart, into the strap.



Congratulations, you've created a belt for your 18" doll!

Tip: The five prong holes allow the belt to be tightened or loosened considerably so it can be worn at the waist or on the hip.

